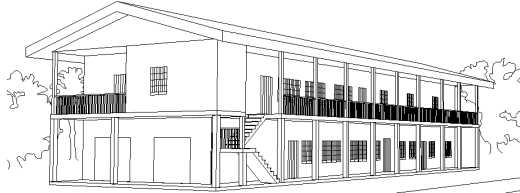


The friendship link between Bo District in Sierra Leone and Warwick District, UK

COMMUNITY CENTRE NEARS COMPLETION

The first spade of concrete and traditional libations were poured in November 2002. We now fully expect that the final lick of paint will have been applied by November 2007. Almost all of the funds to make this happen have been raised by and from the people of Warwick District. Thanks to one all! In recognition of your efforts via the advocacy of our Chair Jane Knight, DFID have agreed to fund the final works to make the building operational, and that work is under way. Jane says "This is a marvellous turn up for the books. It means that Bo OWL can now really concentrate on implementing its purpose; and the rest of our funds and those that are so generously coming in can help equip the Centre fit for its purposes such as the Schools Resource Centre" Photos have appeared in the newsletter at various stages of progress; we thought we might like to remind ourselves of the original dream by this artists



An Artist's Impression of the Completed Building.

impression.

OUR 25th ANNIVERSARY YEAR CONTINUES



Thanks to the Awards for All grant, our ambitious year of activities has been getting into full swing. As this newsletter goes to press, our dual event on June the 9th is about to give people a good account of where we have got to so far and a taster of what is in store. At the Pump Rooms Bandstand a number of bands will be inviting all and sundry to enjoy our celebrations. We are calling this our "Little Africa Event" in anticipation of our "BIG AFRICA EVENT" planned for the 10th November. In North Hall of Spencer Yard will be the first preview of the PICTURE POSTCARD DISPLAY



Here are two examples taken from our website display. The left one is from Warwick on the theme of friendship and the right one is from Bo on the theme of aspiration.

If you would like to book the display please email pictures@oneworldlink.org.uk. To see on line go to <http://www.kwarr.co.uk/owl/> or phone 01926 815004



We are still building our TIMELINE. You can add to it. See it as it stands on Page 3 overleaf

9th June also sees our first big push to collect, collate, and catalogue our ARCHIVE. As much as possible will be digitised for easy storage and viewing. We still need your memories and memorabilia to record or photograph. Please phone 01926 815004 or 312593 or email info@oneworldlink.org.uk.

We are working on an INTERACTIVE ROADSHOW intended to be both entertaining and instructive. If you would like to help or find out more or book it please phone 01926 332828 or 425403 or email info@oneworldlink.org.uk. We now have a projector for sound video, and increasing number of displays and various ideas for presentation.

ALL OUR ANNIVERSARY ACTIVITIES ARE PARTICIPATORY - YOU AND YOUR IDEAS ARE WELCOME

THE SOUTHERN VOICE MUST BE LISTENED TO



Mary Bakarr is an eloquent voice from Bo who was with us in Warwick District in May.

She was taking part in a project to study and promote the southern voice in school linking partnerships. This took her to London on two occasions. She is the Headteacher of one of the two shifts at New Gerihun Primary Road School linked with Emscote Infants School Warwick. You can read more about Mary's visit on page 4. Here is a one sentence extract from one of the workshops that Mary engaged in "South will commit to linking as a community passion and include all. North commit according to the size of the grant." This is an ongoing project and we look forward to learning from its findings in due course

PEOPLE



LOSS

With deep regret we report the death of A T Jalloh. Mr Jalloh was the Principal of Ahmadiyya Secondary School linked with North Leamington School. Tragically killed in a road accident with two senior colleagues. He is pictured here receiving a shield from Royal Leamington Spa Rotary on behalf of Bo Rotary

SOME MORE VISITORS FROM BO/KENEMA

Three Sierra Leonians are currently on the Peace and Reconciliation Course at Coventry University. Steve Kandaineh, Fr Augustus Combey, and Augusta Kalone. The latter two are pictured. They have both visited local secondary schools.

We are also hoping to meet Sally Kargbo a member of Bo OWL and Kayoma who is at Birmingham University for 2 months



NEW FACES



Since Ivana Hughes-Jones joined last year she has been very active, not least in fund raising ! She organised a gig at Bath Place which netted nearly £600 for OWL



Ian Bayliss is in charge of the OWL printer + printing. Nearly all our printing is done by Ian



This is the face of the man behind all the pictures that have been appearing on our website and will be on display at various venues and has been developing our archive
Kip Warr



Richard Edwards our Membership Secretary will be very pleased to hear from you at any time, but especially to renew your subs!



Johannes Mallah and Jane Knight are the Chairs of Bo OWL and Warwick OWL respectively. Jane goes to Bo at the end of June and Johannes hopes to visit Warwick later in the year. They have both been involved since the early days of the link, and can now be proud of its achievements



One World Link Timeline

Thanks to the contribution of members; collation by Myf Hodkin, and transcription by John Knight and Kip Warr. This Timeline now exists in various forms not least on our website. Additions and changes are welcome at any time. Jump straight to the Timeline: www.oneworldlink.org.uk/documents_1/timeline.htm

<u>2007</u>	25th Anniversary Celebrations in Warwick: Big Africa Event, Postcard Picture Exhibition, Archive Event. Visit to Bo by Kip Warr. DFID agree grant to complete OWL Community Centre, Bo
<u>2006</u>	25th Anniversary Celebrations in Bo: Street March, Anniversary Party. Visits to Bo by Sarah Davis, Joe Cannon, Alison Bryan, Maria Franchi, Brian Austin, Danny Foulstone, Jane Shakespeare, Jane Knight. Visits to Warwick by Fr. Peter Konteh and Michael Samai
<u>2005</u>	Mayors sign formal friendship link, Africa seminars at Warwickshire college. OWL hosted UKOWLA conference on Sierra Leone links. Visits to Bo by Mota Singh, Bill Evans, Janet Alty and Hussine Yumkella Visits to Warwick by Wusuh Sanoh, George Mbago, Jane Myambe, Joe Pyne, V.V. Bockarie and Josephine Komeh
<u>2004</u>	Two year plan. African party. Public meeting. Schools phone link. Visits to Warwick by Joseph Bockarie, Teresa Bangali and David Ngombu. Visit to Bo by Jane Knight
<u>2003</u>	Kayoma group started in Bo. Concert by "Songlines". Library party. Frank Judd speaks at AGM. Construction of OWL Centre begins. Visits to Warwick by Mrs Nicholas (Bo mayor) and J Bengali Visit to Bo by Lee Hales and Maria Franchi
<u>2002</u>	Leamington library "OWL" shelf set up. Site found for OWL Community Centre. Visits to Warwick by Head of Amadiyya School and Fr. Peter Konteh. Visit to Bo by John McFarlane, John Myers, and Bruce Knight (collecting Mende songs)
<u>2001</u>	Meeting with Sierra Leone President and High Commissioner. UKOWLA National Conference in Leamington Spa. Visits to Warwick by Marie Theresa Bockarie, Joseph Kobbah, Teresa Bangali, Festus Foray and Moussa Conteh. Visit to Bo by Jane Knight and Bill Evans
<u>2000</u>	Rebel attack on Freetown. Mini marathon Bo. "Africa" party for Bo fund. Container sent.
<u>1999</u>	Major rebel attack on Freetown. London prayer service for Sierra Leone. Ceasefire signed by Kabbah and F. Sankoh. OWL meeting with Moussah Conteh. AGM with R. Clarkson and Mban Khabu.
<u>1998</u>	ECOMOG forces liberate Freetown. Bo situation at its worst. UKOWLA Conference Birmingham. OWL/Koloseum cooperation confirmed. Moussa Conteh visits Bo.
<u>1997</u>	Coup in Sierra Leone. Books and money sent to Bo. UKOWLA Conference Stevenage.
<u>1996</u>	Multiparty elections. Ceasefires. Visit to Bo by Tony Sheriff. Joint OWL/UNA meeting with Derek Partridge, former Sierra Leone High Commissioner. Schools linking seminar at Aylesford school. AGM with Ambrose Gander
<u>1995</u>	Sierra Leone evening with Moussa Conteh. Money sent to Bo for medical supplies, food and household goods.
<u>1994</u>	Visit to Warwick by Fr. Patrick Koroma. AGM: guests Dr Jenny Gibson and Mrs Sesoy (wife of Sierra Leone Deputy High Commissioner)
<u>1993</u>	Africa Evening. OWL display Dale Street for One World Week. Sierra Leone weekend for students and expatriates.
<u>1992</u>	Visit to Warwick by Henry Sheku. Noel Banks (Water Aid) to Bo. Shipment of medicines.etc Joint OWL/UNA meeting with former Sierra Leone Governor General Sir Banje-Tejan Sie.
<u>1991</u>	10 Years' Celebration Meeting. Shipment of typewriters and paper. Visits to Warwick by Moussa Conteh, Edward Allieu and Margaret Foday. Two Sierra Leone Weekends.
<u>1990</u>	UKOWLA workshop "10 Years of Linking" hosted by OWL. Visit to Warwick by Mohammed Lappia and Raymond James. Myf Hodkin visits Bo
<u>1989</u>	Sierra Leone weekend for expats and visitors. OWL concert - S.E. Rogie. Joint OWL/UNA meeting. Visits to Warwick by Sam Stevens and Regina Balon. Visit to Bo by James Proctor and Helen Austin
<u>1988</u>	Sierra Leone Symposium in Birmingham. Public meeting on Wells/Clinic Project. OWL gains charitable status. Visits to Warwick by Johannes Mallah, Joe Taylor and Angela Koker. Visits to Bo by Tim Knight and Marion Grimwood
<u>1987</u>	Bo Wells and Clinic Project started. "Gbotima Development Association". UKOWLA Conference Sheffield. Exercise books shipped to Bo. Visits to Warwick by Bo Scouts and Sam Kpakra. Visit to Bo by Janet Alty. Dr Griffiths again
<u>1986</u>	Seminar in Leamington Town Hall "Warwick District and World Hunger". Educational forum at Kenilworth School. Visits to Warwick by Abraham Mensa, Moussa Conteh, Tony Sheriff and Momadu Koroma. Dr Griffiths went to work on Bo-Pujehun Project.
<u>1985</u>	Val Davis, Leamington Mayor, sends medicines to hospital in Bo. Visit to Bo by Pat Carless and by Roger Bates, Verity Smith and 12 Venture Scouts from Dale Street Methodist Church. Visit to Warwick by Fr Patrick Koroma
<u>1984</u>	Public Meeting in Leamington Spa Town Hall, 200 attended. Visit to Warwick by Mr Kondo, Odette Owada, Joseph Cooper and Ben Smith. BBC interviewed link members in Warwick and Bo for a programme on "Third World Linking".
<u>1983</u>	Sierra Leone Pack "Living in Bo" produced for Third World Information Centre. Shipment of books, medicines etc. 2nd National Linking Conference at Marlborough. Visits to Bo by Jane Knight, Sheilagh Holmes and Dr Paul Gulley
<u>1982</u>	Jane Knight and Moussa Conteh spoke about the link on BBC Women's Hour. First North-South links- Conference in Oxford where 12 links were present. Visits to Bo by Jane Knight, Ann Parker and Bob Crowther
<u>1981</u>	Bo-OWL committee set up. Steering committee under Professor P McAuslan. First AGM for Warwick OWL. Visit to Warwick by Albert Lamin Visits to Bo by Jane Knight and Colin McAllister
<u>1980</u>	Bo chosen formally as linking partner at meeting with Sierra Leone High Commissioner.
<u>1979</u>	Frank Judd (former FO Minister) addressed local groups on "Third World" issues. Committee formed to define aims and choose an area

Mary Bakarr's visit.

During May, we had a visit from Bo of Mrs Mary Bakarr, Head of the BDEC Lower School, New Gerihun Road. This had been hastily arranged following confirmation of a grant from Oxfam to the Tower Hamlets Humanities Education Centre in London for their 'Southern Voice in Linking' project. This enabled us to bring Mary over to take part in this project, but at the same time spend time with us in Warwick District.

Despite this being Mary's first visit to any country outside Africa, within 24 hours of her arrival she was involved with a day-long project meeting in Tower Hamlets, accompanied by Maria Franchi, who had cooperated with Margaret Burr at the Centre to set this up. According to Maria, Mary's input at that meeting with teachers from Ghana and others, was 'brilliant'!

She subsequently attended a further meeting in London, at which our Jane Knight also participated. One World Link will themselves benefit from the outcomes of this project by enabling our linked schools to better understand linking from a Southern perspective.

We had a welcoming party at Jane Knight's home on the Thursday evening and it was good to see quite a number of members there to welcome her. From then until her farewell at John and Marian Myers garden party three weeks later, Mary was in constant demand! The first visit she made here was to her own linked school at Emscote Infants and met the new Head there, Deborah Cossins, followed by a tour of the school and introductions to all the staff. This was quite an emotional time. She subsequently went back and spent extended time with the children - "They asked so many questions!", she exclaimed.

While with us Mary participated in visits to a number of other linked schools, spending a considerable amount of time at Clapham Terrace, Telford Infants, Brookhurst and Ferncumbe Schools. She also met teachers and staff at Kingsway School, who are just about to embark on their own link, and paid a visit to Shrubland Street School. She also spent a day with our Teachers' materials planning group looking at the resources they had produced so far and also critically reviewed their latest pack on Food. Her input was invaluable and they also discussed how the materials they have been producing here might be of value, possibly suitably modified, to the teachers in Bo. They also talked about the importance of the proposed teachers' resource room at the Bo-OWL Community Centre. As a result of their meeting with Mary, our group will have some proposals to put to OWL. Subsequently, Mary joined us at the Primary Teachers' Group meeting, where a number of teachers from our schools had a worthwhile 'head-to-head' with her.

In addition, Mary was able to spend time with the Catholic Women's League in Kenilworth with a view to their linking with Mary's own Catholic Women's group in Bo. She also participated in a Churches Together discussion group on Slavery. And she joined the congregation at St Peter's Church for Sunday worship.

On the social side, she was entertained for meals by several members, including the previous Head of Emscote, Moira Dickson, who had had contact with Mary previously and was pleased to meet her in person. She was taken on a tour of Warwick with Alison Bryan and entertained at the Dell Party in Leamington! She had also seen something of London while there and made a brief visit to friends in Northampton.

Brian Austin, OWL Schools Coordinator (full report from Brian 01926 428635 or education@oneworldlink.org.uk)

COMMITTEE NEWS

Unfortunately Mary Weir has relinquished the post of Secretary but remains on the committee.

This post is now vacant with members sharing out the jobs for the time being.

Committee meetings are open to all members. You are welcome to come and have a look

The next committee is at 7 p.m. on 24 July at the African Caribbean Centre Bath Place, Leamington

CAN YOU LEND A HAND?

We feel we are doing a good and worthwhile job.

There is always more to be done, and what we do would be done better with more members to help

Some jobs are one offs, others are longer lasting, and are varied in nature. Whatever your talents or interests, there is likely to be something you can do.

Contact John Myers on 01926 425403 or

info@oneworldlink.org.uk

OWL MEMBERSHIP RENEWALS

A big thank you to everyone who has renewed their membership. Can I ask those who have yet to renew to please do so soon as we very much depend on the financial support of our members.

We are also very grateful to those who switched their standing order to our CAF account. If you have switched, whilst the form includes a request to cancel your existing standing order, it might be prudent to check with your bank in case they overlook this.

Finally, can I ask those who are currently paying into our Barclay's account by standing order if you would consider switching to our CAF account as it is financially better for us. The details were in the recent membership letter I sent, but please contact me if you no longer have this at richedd@gmail.com or 07759353395

Many thanks Richard Edwards Membership Secretary

www.oneworldlink.org.uk is our website address. Please pay us a visit